

# US 50 Multimodal Corridor Enhancement & Rehabilitation Project

NADARAJAH "SUTHA" SUTHAHAR  
Project Management Office Chief  
Caltrans District 3

July 25, 2024



# US Highway 50 Bus/Carpool Lanes Phase II & Rehabilitation Project – I-5 to Watt Avenue

Design Build contracting method

Design-Builder: Flatiron West

Location: Sac/Yolo county line to east of Watt Avenue Interchange

RFP: Sept 2019. Contract Award: April 2020. Contract Approval: June 2020.

Estimated Completion: December 2025



# SAC 50 Design-Build Multimodal Corridor Enhancement Project



**PROJECT AREA**  
The project limits are from **PM L0.2** to **PM R6.1** (on U.S. Highway 50 from Interstate 5 to east of Watt Avenue in Sacramento County).



Map not to scale



CALIFORNIA DEPARTMENT OF TRANSPORTATION





# US 50 Multi-Modal Corridor Enhancement & Rehabilitation Project



Sep 7, 2023 at 8:20:40 AM  
Sacramento  
#Seg 1 #10 th St #1-5 MOT



Jan 4, 2024 at 8:30 AM  
+38,557919,-121.557919  
#Seg3 #48th St





# Major Features

**HOV lane from I-5 to Existing HOV at Watt Avenue**

**Widening 11 Bridges**

**Continuously Reinforced Concrete Pavement**

**Sound-walls on south side from Stockton Blvd. to 65<sup>th</sup> Street**

**Increase Vertical Clearance at Seven Overcrossings**

**ITS Elements (Changeable Message Signs, Ramp Meter Upgrades, New Cameras)**

**Upgrade Three Storm Water Pumping Plants**

**Passing Track on Sac RT Light Rail Gold Line to Folsom**





Sound Wall 14







Jun 24, 2021 at 2:05:01 AM  
US-50 W  
Sacramento CA 95818  
United States

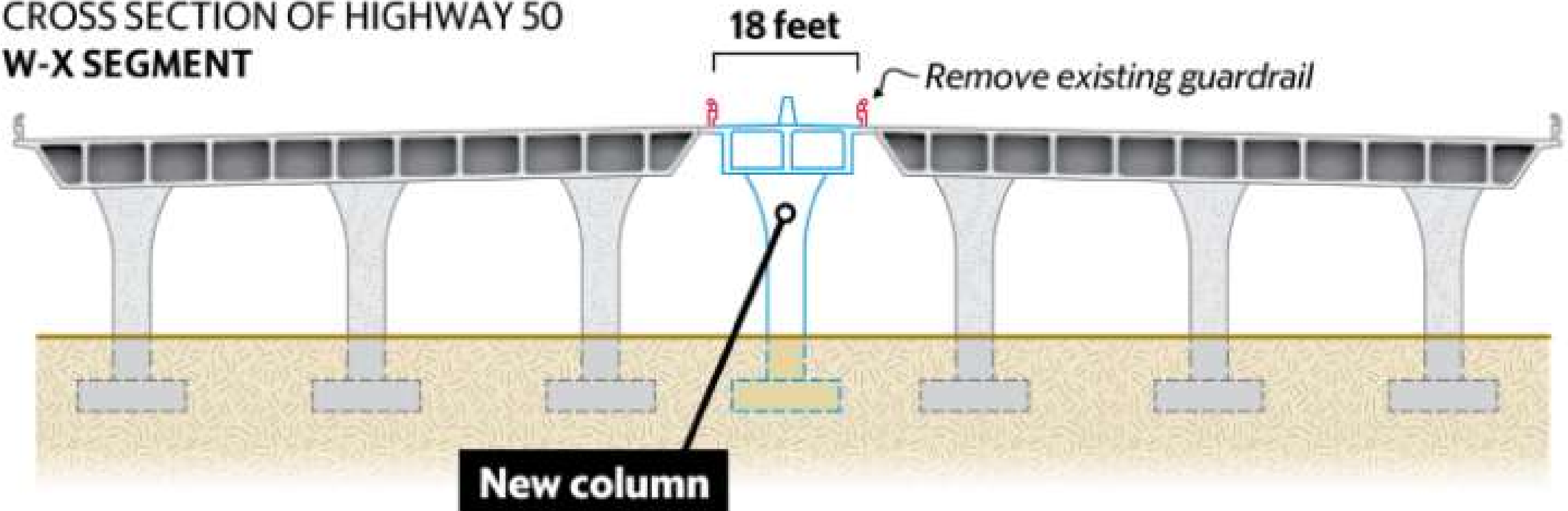




## FREEWAY EXPANSION

The Highway 50 construction project will include new columns in the center of the freeway to support filling an 18-foot gap that exists in sections of the W-X segment between the eastbound and westbound lanes.

### CROSS SECTION OF HIGHWAY 50 W-X SEGMENT



Map: [NATHANIEL LEVINE](#) | Source: Caltrans







US 50 Design-Build

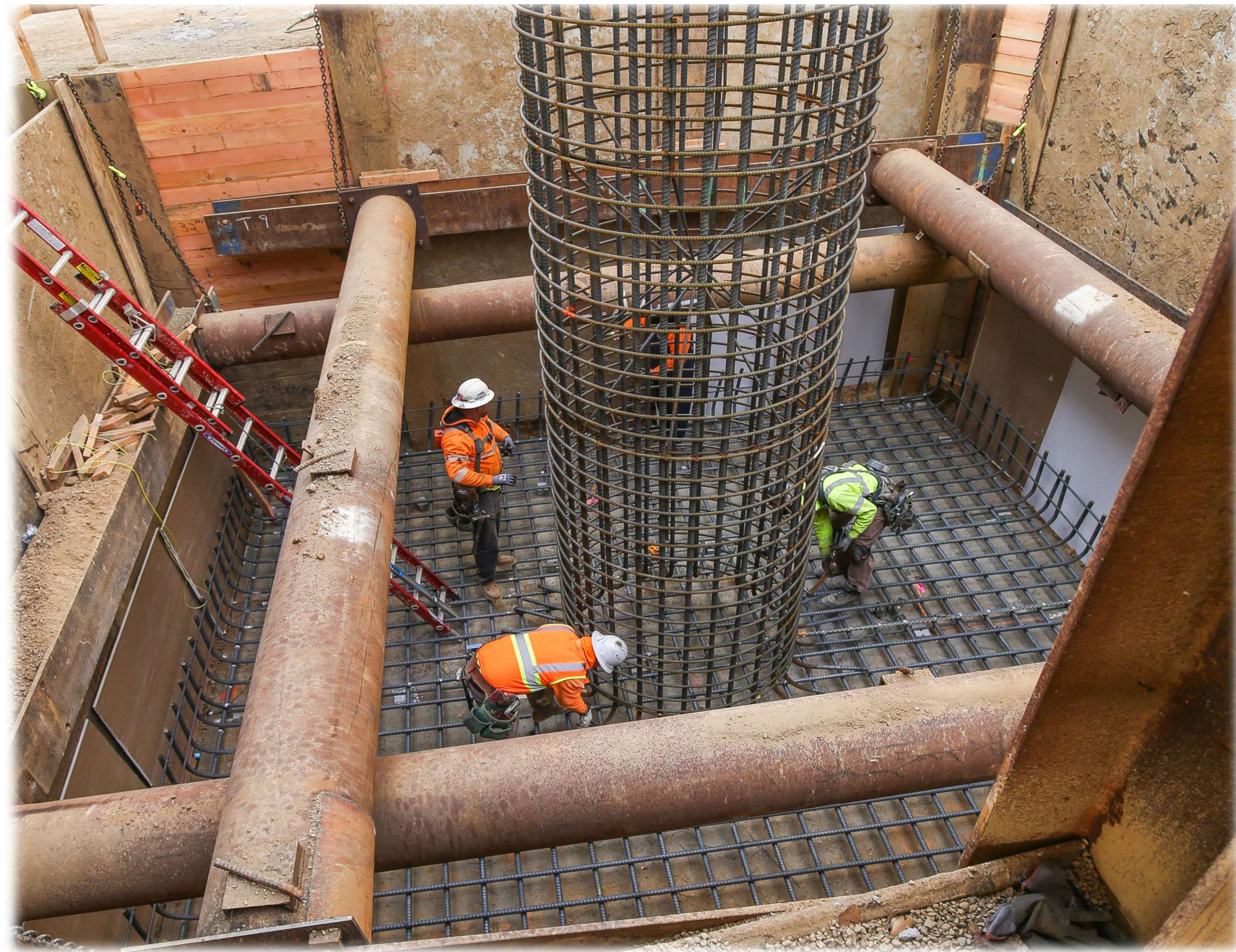
# Segment 4 Folsom Blvd





US 50 Design-Build

# Elmhurst Bent Footing Bent 8





# US Highway 50 Bus/Carpool Lanes Phase II & Rehabilitation Project – I-5 to Watt Avenue

## Funding:

- **STA \$28.4 million (HOV)**
- **SB1 Solutions for Congested Corridors Program \$90 million (HOV)**
- **Caltrans SHOPP \$353 million (Rehab)**
- Total funds \$471.4 million
  
- **Additional SHOPP funds for cost overrun \$16.1 million in December 2023 (Rehab)**





---

Project Approval & Environmental  
Document

May 2017

Request for Qualification for Design-Build  
Project

March 2019

Request for Proposal for Design-Build  
Contract

September 2019

Award Design-Build Contract

April 2020

Construction Start

February 2021

Complete Major Construction

December 2025



# Tentative Segment Completion Dates



## Segment 1

I-5/US 50 interchange to 26<sup>th</sup> Street

**Estimated Completion:**

September 2024



## Segment 2

26<sup>th</sup> Street to 39<sup>th</sup> Street

**Estimated Completion:**

June 2025



## Segment 3

39<sup>th</sup> Street to 65<sup>th</sup> Street

**Estimated Completion:**

August 2024



## Segment 4

65<sup>th</sup> Street to Howe Avenue

**Estimated Completion:**

July 2025



## Segment 5

Howe Avenue to east of Watt Avenue

**Estimated Completion:**

August 2024



# Reasons for Delay and Cost Increase

16

(\$16,130,000 for Rehab and \$3,936,000 for HOV as of 7/23/2024)

- Delay in acquiring Construction and Maintenance (C&M) Agreement from Union Pacific Railroad (UPRR) – 50%/50% between Rehab and HOV
- Unsound concrete at the Folsom Boulevard Undercrossing – 100% Rehab
- Additional Construction Zone Enhanced Enforcement Program (COZEEP) due to speeding and collisions in the construction zone – 80%/20% between Rehab and HOV
- Enhanced striping for traffic handling during construction – 80%/20% between Rehab and HOV
- ITS construction changes due to design standard changes after the DB procurement - 100% Rehab
- Department directed the contractor to construct six access stairs for ITS elements – 100% Rehab
- Asphalt price index fluctuation cost beyond the allowance – 67%/33% between Rehab and HOV
- Other miscellaneous issues – 80%/20% between Rehab and HOV



# QUESTIONS?

